

# 2020-2021 SCHOOL START PLANNING TASK FORCE UPDATE

NSD PARENT INFORMATION ZOOM MEETINGS  
JUNE 12, 2020



# THE TASK FORCE MEMBERS

Site	Name	Role
MG	Jason Busack	Social Worker
MG	Daria Ramirez	Assistant Principal
MW	Susan Necessary	Science Lab Tech
MW	Liz Guardado	Parent
NH	Emily Frey	RSP Teacher
NH	Heather Haggart	3 <sup>rd</sup> Grade Teacher
OH	Julie Vasquez	Parent
OH/NH/PL	Kelly Ferko	Pre-School Coordinator
OO	Diane Diamond	AP/Dual Language Immersion Program
OO	Chelsea Grizwold	Parent
PL	Christina Sieren	Parent
PL	Paul Zamperin	6 <sup>th</sup> Grade Teacher
PC	Melanie Musella	SDC Teacher
PC/SR/VV	Giselle Price	Community Liaison/Parent
SR	Chad Rose	Principal
VV	Carla Lavy	TK Teacher
WC	Chelsea Gutowski	Library Media Tech
WC/DO	Rosana Valadez	Executive Assistant/Parent
DO	Sandi Gault	Nurse
DO	Dee Jamison	Asst. Supt Instruction
DO	Jeff Pelzel	Superintendent

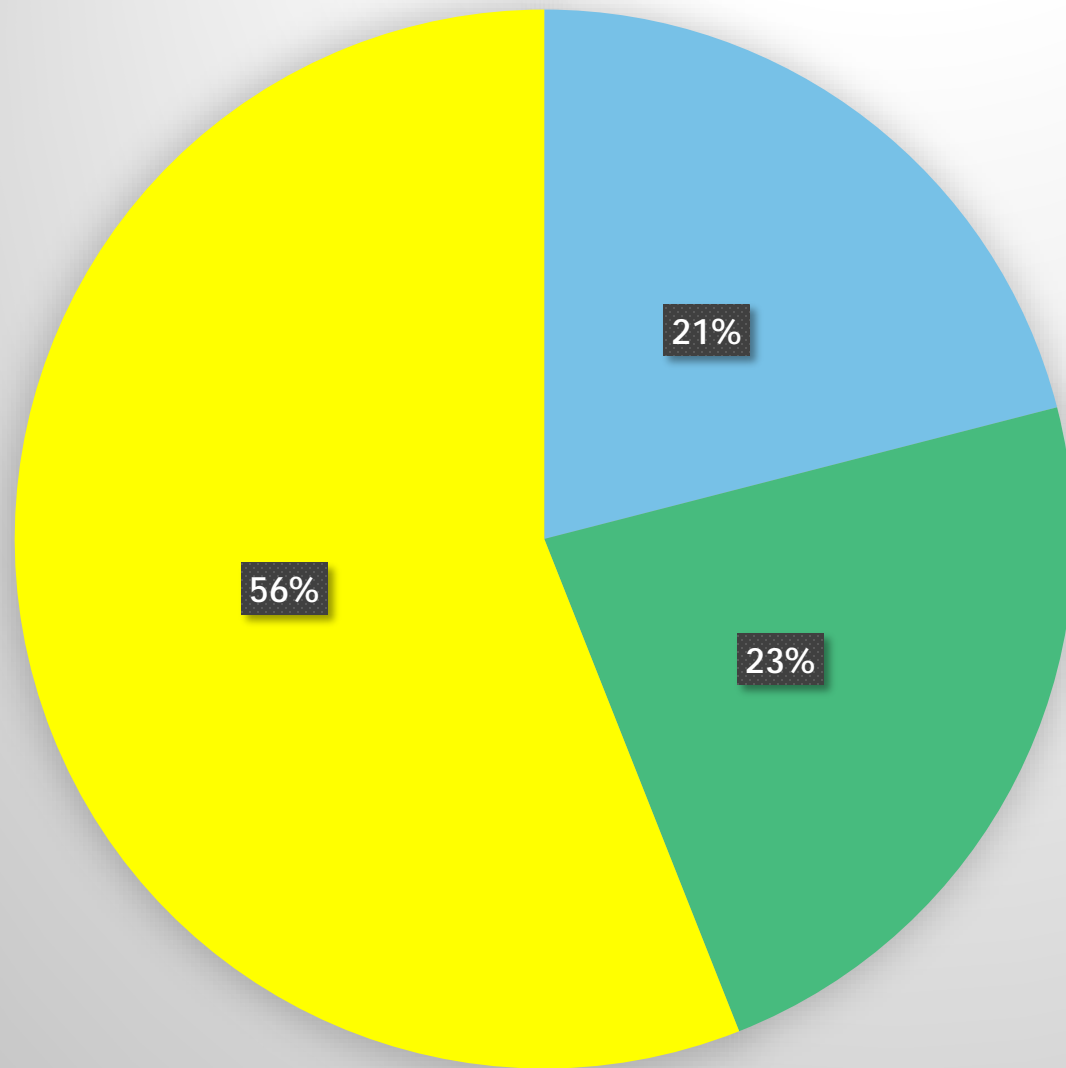
# OUR DATA COLLECTION



# PARENT SURVEY RESULTS

School	100% Distance Learning	Hybrid Model	Traditional Model	Total Responses	Childcare Needed
MG	142	104	274	520	179
MW	70	129	322	522	215
NH	100	73	146	319	95
OH	114	136	249	499	167
OO	57	60	181	298	94
PL	43	39	144	226	80
PC	139	166	407	712	267
SR	155	178	355	688	241
VV	97	136	416	649	250
WC	52	43	119	214	76
Total	969	1064	2613	4646	1664

## Percentages by Model Choice

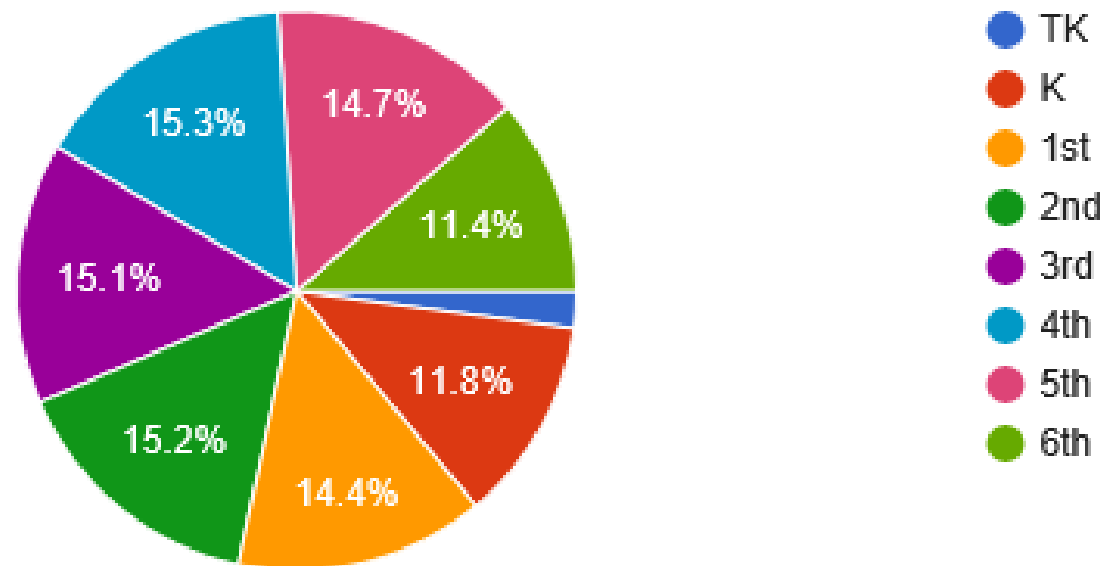


- 100% Distance Learning Model
- Hybrid Model
- Traditional Learning Model

# TK-6 STUDENT SURVEY RESULTS

Grade Level / Nivel de Grado

1,754 responses



# STUDENT SURVEY RESULTS

## HOW MUCH DID THE FOLLOWING ACTIVITIES HELP ME?

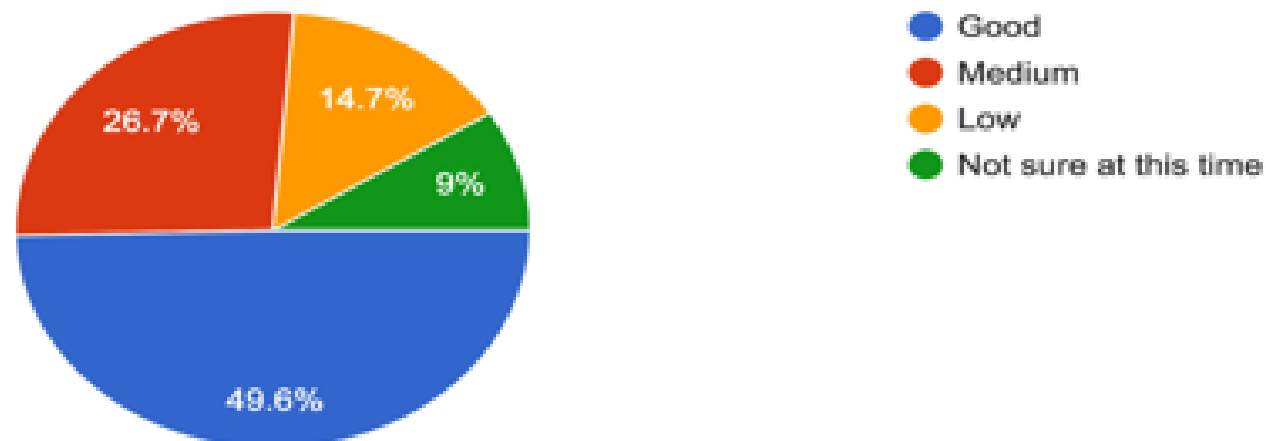
Activity	Very helpful	A little bit	Did not help me	Did not participate
Live Teaching	978 (56%)	393 (22%)	133 (8%)	250 (14%)
Video Lessons	899 (51%)	602 (34%)	140 (8%)	113 (7%)
Assignments	1021 (58%)	591 (34%)	132 (7.5%)	10 (.5%)
Working with classmates	495 (28%)	380 (22%)	238 (13%)	641 (37%)
Working with my teacher by myself	731 (42%)	277 (16%)	130 (7%)	616 (35%)
Getting feedback on my work	1005 (57%)	439 (25%)	183 (10%)	127 (8%)
Whole class meetings	877 (50%)	516 (29%)	233 (13%)	128 (8%)



# TEACHER SURVEY RESULTS

If the State of California deems it safe and allows schools to open for the 2020-2021 school year, and the district follows all of the county health guidelines, what level of confidence do you have in returning to school campuses in the fall?

266 responses



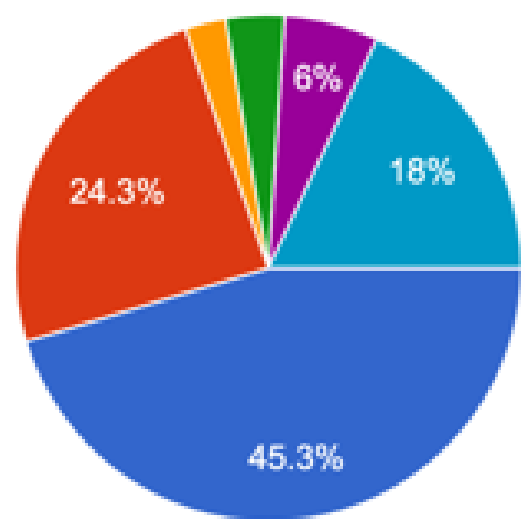




# TEACHER SURVEY RESULTS

If the State of California deems it safe and allows schools to open for the 2020-2021 school year, and the district follows all of the county health guidelines, are you comfortable coming to work?

267 responses



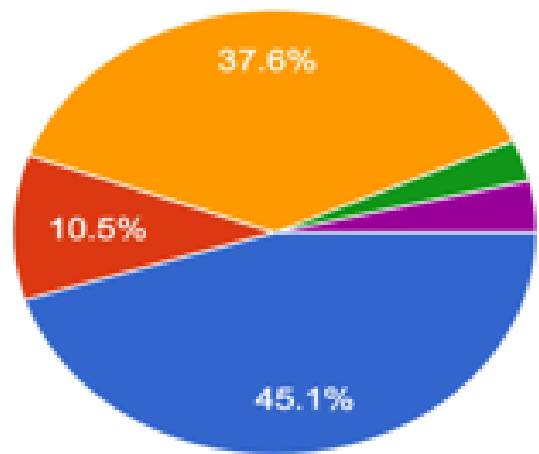
- Yes
- Yes, but only if there is a significant improvement in number of active COVID-19 cases
- No, I am not comfortable returning to my work site.
- No, I have health conditions that put me in the high risk category for COVID-19
- No, I have people in my home who are in the high risk category for COVID-19
- Maybe, I'm not sure at this time.



# TEACHER SURVEY RESULTS

If the State of California deems it safe and allows schools to open for the 2020-2021 school year, and the district follows all of the county health guidelines, what do you think would be best for students in the fall?

266 responses



- I would like a full day school (as normal as possible) and feel it is safe for me and for students
- I would like Independent Study (continue distance learning with students at home)
- I would like students to return to school but on a modified schedule (a hybrid schedule)
- My job is removed from the classroom and am not sure what is best.
- No opinion.

# SOME OF THE CURRENT STATE HEALTH GUIDELINES AS OF JUNE 12, 2020

j. Educational institutions (including public and private K-12 schools, colleges, and universities). Public and private K-12 schools and school-based programs may begin planning for forth-coming school year in compliance with the State Public Health Officer's guidance for Schools and School-Based Programs;

- SOCIAL DISTANCING (6 FT)
- CONSISTENT GROUPS OF STUDENTS AS POSSIBLE
- CLOTH FACE COVERINGS SHOULD BE WORN BY ALL STAFF AND STUDENTS
- DAILY TEMPERATURE CHECKS
- ONE STUDENT PER SEAT ON A BUS, EVERY OTHER SEAT
- MEALS IN CLASSROOMS
- NO LARGE GATHERINGS

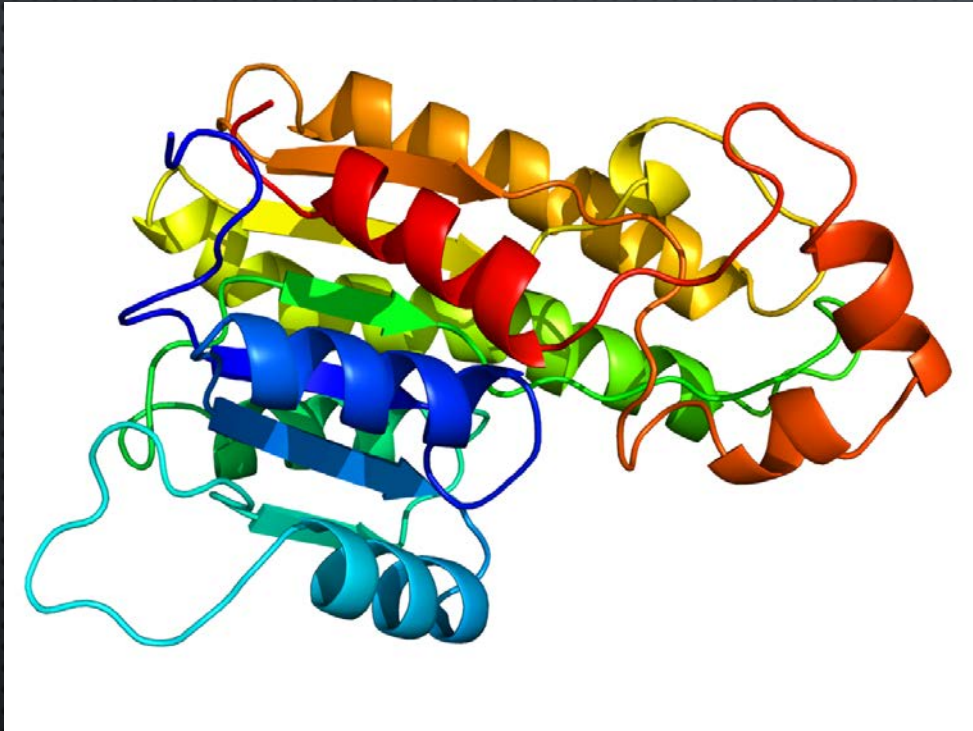
# RESOURCES USED TO MAKE OUR RECOMMENDATION



L  
R  
A  
fo  
th

is  
ng:  
tend  
ciation  
d youth  
be more  
ek.  
ten to  
tion.  
s.  
nd  
to the  
takes place  
families.  
/  
ents  
rning over  
ormal" to  
ect  
chool year, or  
IS 2020 s - May 2020

# MODELS THE TASK FORCE CONSIDERED



- WEEK ON-WEEK OFF
- SPLIT WEEK (2 DAYS IN PERSON/3 DAYS DL)
- AM/PM MODEL (2.5 HOURS IN PERSON M-TH) AND DL
- 100% FACE TO FACE

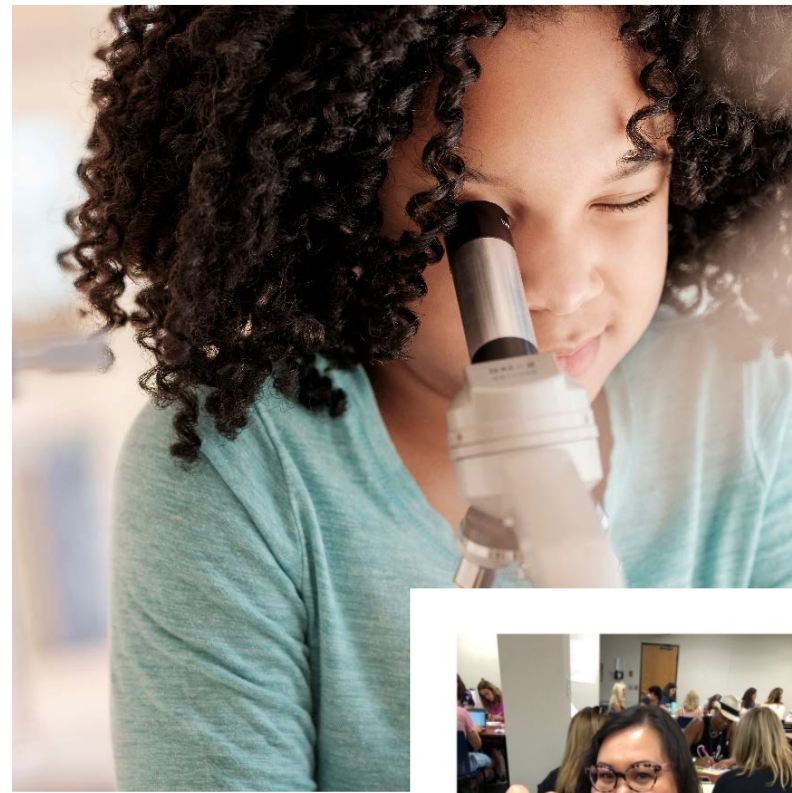
# MODELS FOR CONSIDERATION 2020-2021



NSD Innovations Digital Learning Academy



NSD Blended Learning Model



# MODEL: NSD INNOVATIONS DIGITAL LEARNING ACADEMY

## FULLY INTEGRATED DIGITAL LEARNING PLATFORM BASED ON NSD BEST PRACTICES

### PROGRAM DESCRIPTION:

- CONSISTENT ORGANIZATION OF GOOGLE CLASSROOMS ACROSS GRADE LEVELS
- ENGAGING AND AGE APPROPRIATE LEARNING ENVIRONMENT
- HIGHLY INTERACTIVE INSTRUCTION THAT INCLUDES A COMBINATION OF LIVE AND VIDEO LESSONS FOR ALL CONTENT
- INTEGRATES SOCIAL EMOTIONAL SUPPORTS TO CHILDREN THROUGH REGULAR CHECK-INS
- REGULAR ON-GOING FEEDBACK TO STUDENTS AND PARENTS REGARDING ACADEMIC PROGRESS

# PROPOSED LANGUAGE BY STATE IN ORDER TO RECEIVE HOLD HARMLESS FUNDING FOR 2020-2021:

PROVIDE DISTANCE LEARNING FOR STUDENTS IN THE EVENT OF A SCHOOL CLOSURE, OR FOR INDIVIDUAL STUDENTS WHO ARE UNABLE TO ATTEND SCHOOLS DUE TO THE IMPACTS OF COVID-19, WHERE DISTANCE LEARNING

- 1) IS SUBSTANTIALLY SIMILAR IN CURRICULUM AND QUALITY TO CLASSROOM INSTRUCTION,
- 2) IS PROVIDED IN VARIOUS FORMATS, AS NEEDED, TO MEET STUDENT AND FAMILY NEEDS,
- 3) INCLUDES SPECIFIC STRATEGIES FOR STUDENTS WHO ARE NOT PERFORMING AT GRADE LEVEL OR WHOM NEED SPECIFIC INSTRUCTIONAL SUPPORTS, SUCH AS ENGLISH LEARNERS AND STUDENTS WITH DISABILITIES,
- 4) ALLOWS FOR DOCUMENTATION OF STUDENT PARTICIPATION AND PROGRESS, AND
- 5) INCLUDES OUTREACH TO FAMILIES



**NSD TK-6 DIGITAL  
LEARNING  
INSTRUCTIONAL BEST  
PRACTICES**

- ORGANIZATION
- LEARNING ENVIRONMENT
- INSTRUCTION
- STUDENT ENGAGEMENT
- ASSESSMENT

# PARENT SUPPORT BEST PRACTICES IN A DIGITAL LEARNING ENVIRONMENT

- LEARNING ENVIRONMENT AND ROUTINES
- CURRICULUM & INSTRUCTION
- PARENT ENGAGEMENT



# MODEL: NSD BLENDED LEARNING

**WHERE DIGITAL LEARNING AND THE TRADITIONAL CLASSROOM CONVERGE. ON-SITE TEACHING AND LEARNING IN A SAFE, SOCIALLY DISTANCED SETTING COMBINED WITH DIGITAL LEARNING PLANNING WHEN STUDENTS ARE AT HOME.**

PROGRAM DESCRIPTION:

- CONSISTENT CURRICULUM ACROSS GRADE LEVELS
- HANDS ON ACTIVITIES IN CLASS
- HIGHLY INTERACTIVE INSTRUCTION IN GOOGLE CLASSROOM FOCUSED ON SCIENCE AND SOCIAL STUDIES
- PROVIDES SOCIAL EMOTIONAL SUPPORTS THROUGH ON-SITE COUNSELORS
- REGULAR ON-GOING FEEDBACK TO STUDENTS AND PARENTS REGARDING ACADEMIC PROGRESS

# DRAFT OF DAILY MODEL FOR AN 8:00-3:00 SCHOOL DAY

## AM BLUE GROUP (MONDAY-THURSDAY)

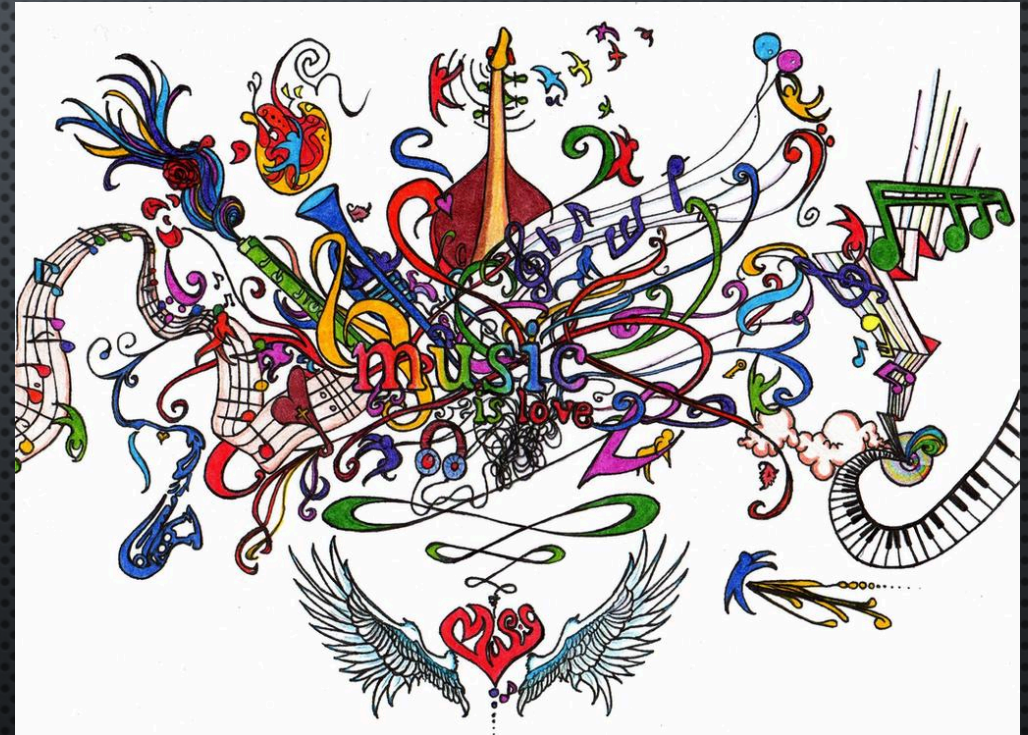
- ARRIVE TO SCHOOL FOR 2.5 HOURS OF IN PERSON INSTRUCTION ON ELA, MATH, AND ELD/ENRICHMENT
- TRANSITION TO LUNCH
  - LUNCH AT SCHOOL OR HOME
- DIGITAL LEARNING IN GOOGLE CLASSROOM FOR SOCIAL STUDIES, SCIENCE AND NSD ON-LINE PROGRAMS
- EXTENDED LEARNING OPPORTUNITIES DURING CHILDCARE UNTIL END OF SCHOOL DAY MAY BE AVAILABLE
- STUDENT SUPPORT SERVICES PROVIDED IN AFTERNOON
- FRIDAYS: DIGITAL LEARNING FOR ALL STUDENTS

## PM GREEN GROUP (MONDAY-THURSDAY)

- DIGITAL LEARNING IN GOOGLE CLASSROOM FOR SOCIAL STUDIES, SCIENCE AND NSD ON-LINE PROGRAMS
- EXTENDED LEARNING OPPORTUNITIES DURING CHILDCARE MORNING SESSION MAY BE AVAILABLE
- STUDENT SUPPORT SERVICES PROVIDED IN MORNING
- TRANSITION TO LUNCH BLOCK
  - LUNCH AT SCHOOL OR HOME
- ARRIVE TO SCHOOL FOR 2.5 HOURS OF IN PERSON INSTRUCTION ON ELA, MATH, AND ELD/ENRICHMENT
- FRIDAYS: DIGITAL LEARNING FOR ALL STUDENTS

# BOTH MODELS WILL HAVE ACCESS TO....

- ART AND MUSIC LESSONS
- DISTRICT PROVIDED COMPUTER DEVICE AND HOTSPOT, IF NEEDED
- ALL STUDENT SUPPORT SERVICES
- STUDENT RESOURCES (DREAMBOX, RAZ KIDS, TYPE TO LEARN, ETC)



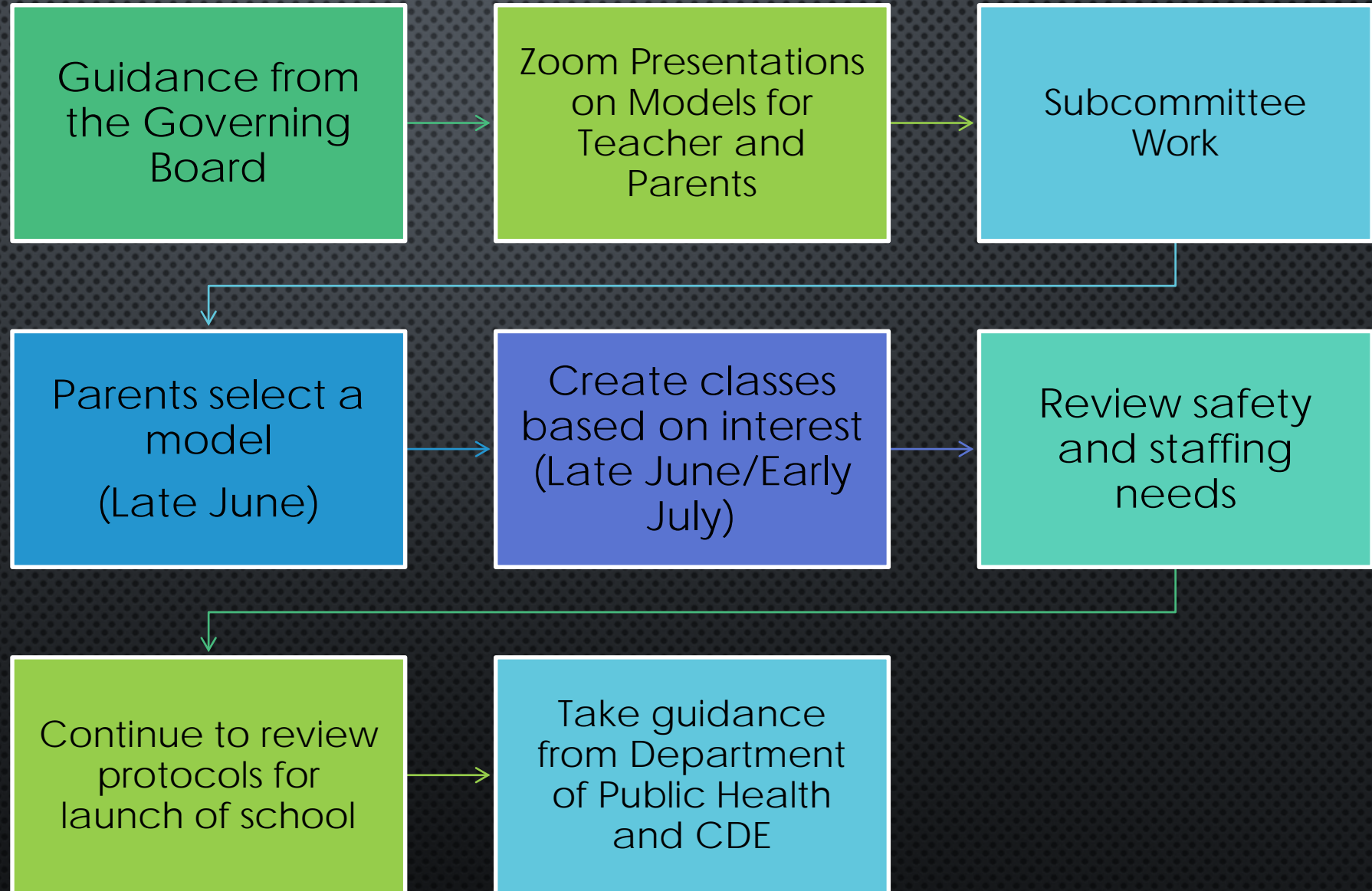
# HEALTH AND SAFETY CONSIDERATIONS

- SOCIAL DISTANCING
- HYDROSTATIC SPRAYERS
- HAND SANITATION STATIONS
- CLEANING SCHEDULE (ADDITIONAL PART TIME CUSTODIANS)
- SIGNAGE AROUND THE SCHOOL
- FACE COVERINGS
- GLOVES
- WORK STATIONS
- OWN SETS OF STUDENT MATERIALS
- BREAKFAST AND LUNCH

# LA COUNTY OFFICE OF EDUCATION WILL BE DISTRIBUTING THE FOLLOWING SUPPLIES TO MEET THE NEAR-TERM NEEDS OF SCHOOLS AND CHILDCARE PROGRAMS:

- NO-TOUCH THERMOMETERS FOR EVERY SCHOOL AND CHILDCARE FACILITY;
- FACE SHIELDS FOR EVERY TEACHER AND CHILDCARE PROVIDER;
- CLOTH FACE COVERINGS FOR STAFF AND STUDENTS;
- DISPOSABLE MASKS;
- N95 MASKS FOR SCHOOL-BASED HEALTH PROFESSIONALS, INCLUDING THOSE INTERACTING WITH SYMPTOMATIC STUDENTS; AND
- HAND SANITIZER.

# NEXT STEPS...





# ANALYSIS OVERVIEW OF VARIOUS MODELS





QUESTIONS?